

KRISS

2020 PRODUCT CATALOG

TABLE OF CONTENTS

TACTICAL

VECTOR G2 CRB	8
VECTOR G2 SBR	8
VECTOR G2 SDP-SB ENHANCED	9
VECTOR G2 SDP-SB	9
VECTOR G2 SDP	10

LAW ENFORCEMENT
& MILITARY

VECTOR G2 SMG	14
VECTOR G2 FX	15
VECTOR G2 INERT	15

RIMFIRE

VECTOR 22 SERIES

VECTOR 22 CRB.	19
VECTOR 22 SDP-SB	19

DMK 22 SERIES

DMK 22C	22
DMK 22C-LVOA	22
DMK 22P-SB.	23
DMK 22P	23

HANDGUNS

SPHINX COMPACT DUTY	28
SPHINX COMPACT	28

SUPPRESSORS

4GSK	31
4GC9 COMPACT	31
4GXT9 EXTENDED	31

ACCESSORIES 32



The KRISS origin story begins in the early 2000s. With the threat of terrorism seemingly boundless, the founders sought to create a new tool to equip those fighting for good in the global war on terror. The idea was simple: create a compact weapon system that would be more controllable, more powerful, and more user friendly than existing, antiquated firearms. It was a simple idea with a very complex solution.

Through many trials, and to the chagrin of many nay-sayers, KRISS unveiled the Vector Submachine Gun in 2006. At the core of this revolutionary firearm was the KRISS Super V System, a multilink bolt design that re-vectors recoil energy away from the shooter. The Super V System, in conjunction with the Vector’s low bore axis, tames powerful cartridges such as .45ACP in which the first Vectors were chambered. Feeding the Vector is done through the ubiquitous Glock® magazine, unifying ammunition between primary and secondary, and simplifying gear configuration. The KRISS Vector is a testament to our commitment to innovation and excellence.

What began as a solitary firearm fourteen years ago is now a burgeoning weapon system available in multiple calibers, colors, and configurations. We have also applied the same ingenuity and craftsmanship to other weapons platforms. This 2020 catalog represents the very best we have to offer thus far. The past has given us invaluable experience to continue to develop new technologies, every bit as revolutionary as the ones that jump started KRISS many years ago.

TACTICAL



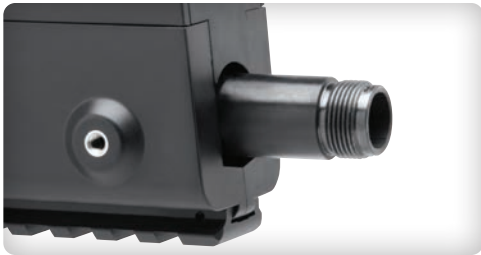
VECTOR G2 **SERIES**

The KRISS Vector is the ideal choice for shooters seeking a controllable, compact weapon system. Available in popular calibers such as 9mm, .40 S&W, .45 ACP, and 10mm, the KRISS Vector is compatible with full size Glock® magazines, which allows shooters to share ammunition between their handgun and KRISS Vector. The KRISS Vector field strips without the use of tools by simply removing 4 takedown pins to separate the major components for maintenance.

A wide range of accessories are also available to give users the ability to reconfigure their KRISS Vector to suit their individual needs whether for home defense, competition, or duty use.

PRODUCT **HIGHLIGHTS**

- A:** Picatinny rail mounting points / optional handguards
- B:** Low profile folding sights
- C:** Brass check feature
- D:** Full length Picatinny top rail
- E:** Ambidextrous short throw safety levers
- F:** Multiple stock options
- G:** Tactile pivoting trigger
- H:** Patented KRISS Super V System
- I:** Glock® magazine compatibility



Threaded muzzle for the option of attaching your favorite muzzle device or suppressor. Selected models only.



The KRISS Vector is compatible with the ubiquitous full size, Glock® magazine. The KRISS MagEx is available for extended .45ACP / 9mm / 10mm capacity.



KRISS SUPER V RECOIL MITIGATION SYSTEM

At the heart of every KRISS Vector centerfire platform is the KRISS Super V System. The nonlinear operation is unlike any other, providing a shooter enhanced control through reduced felt recoil and muzzle climb. The low bore axis also provides control by aligning the bore directly in front of the shooter's hand. Combining both the KRISS Super V System and a low bore axis, the KRISS Vector allows for faster recovery between shots and increased speeds when transitioning between targets.

VECTOR G2 SDP



PRODUCT HIGHLIGHTS:

- > 5.5" THREADED BARREL
- > END PLATE WITH QD SLING MOUNT

CERAKOTE® COLOR OPTIONS:



Model	Caliber	Magazine Capacity	Frame Material	Barrel Length	Overall Length	Height	Width	Weight (Unloaded)
Vector SDP 9	9x19, 9x21	10 / 17 / 40	Advanced metal + polymer composite	5.5 in / 139.7 mm 1/2" x 28 Thread	16.7 in / 425.4 mm	6.8 in / 172.7 mm	2.6 in / 66.0 mm	5.9 lbs / 2.7 kg
Vector SDP 45	.45ACP	10 / 13 / 30	Advanced metal + polymer composite	5.5 in / 139.7 mm 16 x 1 LH Thread	16.7 in / 425.4 mm	6.8 in / 172.7 mm	2.6 in / 66.0 mm	5.9 lbs / 2.7 kg
Vector SDP 10	10MM	10 / 15 / 33	Advanced metal + polymer composite	5.5 in / 139.7 mm 9/16" x 24 Thread	16.7 in / 425.4 mm	6.8 in / 172.7 mm	2.6 in / 66.0 mm	5.9 lbs / 2.7 kg
Vector SDP 40	.40S&W	10 / 15	Advanced metal + polymer composite	5.5 in / 139.7 mm 9/16" x 24 Thread	16.7 in / 425.4 mm	6.8 in / 172.7 mm	2.6 in / 66.0 mm	5.9 lbs / 2.7 kg

EXPANDED CAPACITY

The KRISS MagEx2 Kit is a must have accessory to complement your KRISS Vector, or Glock® handgun. The MagEx2 Kit replaces the baseplate on your full size, standard capacity Glock® magazine to drastically increase capacity. The MagEx2 Kit boasts a capacity of 40 rounds of 9mm when affixed to a G17 magazine, 33 rounds of 10mm when affixed to a G20 magazine, and 30 rounds of .45ACP when affixed to a G21 magazine.



MagEx2 9mm shown with Glock® G17.



MagEx2 .45ACP shown with Vector CRB.





LAW ENFORCEMENT & MILITARY

VECTOR G2 SMG



The KRISS Vector SMG is the ideal choice for law enforcement and military seeking a controllable, compact weapon system for CQB environments. Available in popular calibers 9x19mm and .45 ACP, the KRISS Vector SMG is compatible with full size Glock® magazines, which allows users to share ammunition between their duty handgun and the KRISS Vector. Its safety and fire select levers are specifically designed to be separate and are ambidextrous. The KRISS Vector field strips without the use of tools by simply removing 4 takedown pins to separate the major components for maintenance.

Whether for personal security or kinetic operations, the KRISS Vector SMG provides users the flexibility to reconfigure their KRISS Vectors to suit individual needs through a wide range of accessories.

STOCK OPTIONS:

AR15 STOCK

The rear of the Vector's receiver is threaded to accept any commercial spec or MIL-SPEC AR-15 buffer tube or stock, offering the same stability and feel that many operators are already accustomed.



HELMET STOCK

Designed for users involved in high risk operations where the use of a standard stock is impractical due to additional layers of protection. The stock may be folded for compact storage and is adjustable for length of pull.



CERAKOTE® COLOR OPTIONS:



PRODUCT HIGHLIGHTS:

- > 6.5" THREADED BARREL
- > FOLDING AND TELESCOPING STOCK WITH QD SLING MOUNTS
- > VMR MK5 HANDGUARD WITH HAND STOP AND ACCESSORY RAIL SECTIONS

Model	Caliber	Magazine Capacity	Frame Material	Barrel Length	Overall Length (Folded / Unfolded)	Height	Width	Weight (Unloaded)
Vector SMG 9	9x19	17 / 40	Advanced metal + polymer composite	6.5 in / 165.1 mm 1/2" x 28 Thread	18.5 in / 469.9 mm 27.9 in / 708.6 mm	6.8 in / 172.7 mm	2.8 in / 71.1 mm	7.45 lbs / 3.4 kg
Vector SMG 45	.45ACP	13 / 30	Advanced metal + polymer composite	6.5 in / 165.1 mm 16 x 1 LH Thread	18.5 in / 469.9 mm 27.9 in / 708.6 mm	6.8 in / 172.7 mm	2.8 in / 71.1 mm	7.45 lbs / 3.4 kg

VECTOR TRAINING TOOLS

KRISS Vector Training Products are designed for users seeking to safely train for weapons familiarity and force-on-force scenarios. The lowers are designed to accept any KRISS Vector compatible accessory, allowing users to configure according to training requirements.

VECTOR G2 SMG FX

The KRISS Vector can be outfitted with a FX Lower which allows it to fire training cartridges for force-on-force training. Accessories used on duty weapons may be mounted to the FX Lower, allowing shooters to train seamlessly.



Model	Caliber	Magazine Capacity	Frame Material	Barrel Length	Overall Length (Folded / Unfolded)	Height	Width	Weight (Unloaded)
Vector SMG 9	9x19	17 / 40	Advanced metal + polymer composite	5.5 in / 139.7 mm 1/2" x 28 Thread	18.5 in / 469.9 mm 27.9 in / 708.6 mm	6.8 in / 172.7 mm	2.8 in / 71.1 mm	6.3 lbs / 2.8 kg

VECTOR G2 SMG INERT

The Vector SMG Inert is an invaluable training tool with the same dimensions and functions of the firearm, but without the ability to chamber and fire, it is ideal for dynamic training environments.



Model	Caliber	Magazine Capacity	Frame Material	Barrel Length	Overall Length (Folded / Unfolded)	Height	Width	Weight (Unloaded)
Vector SMG 9	9x19	17 / 40	Advanced metal + polymer composite	6.5 in / 165.1 mm 1/2" x 28 Thread	18.5 in / 469.9 mm 27.9 in / 708.6 mm	6.8 in / 172.7 mm	2.8 in / 71.1 mm	7.45 lbs / 3.4 kg
Vector SMG 45	.45ACP	13 / 30	Advanced metal + polymer composite	6.5 in / 165.1 mm 16 x 1 LH Thread	18.5 in / 469.9 mm 27.9 in / 708.6 mm	6.8 in / 172.7 mm	2.8 in / 71.1 mm	7.45 lbs / 3.4 kg

RIMFIRE



The KRISS Vector 22 series firearms are distinct, semi-automatic rimfire sporting rifles that incorporate the iconic aesthetics and ergonomics of the patented KRISS Vector submachine gun design.

Engineered to fire the .22 LR cartridge and designed for both training and small game hunting, the Vector 22 is a one of a kind firearm that brings out of the box precision, performance, and value in an iconic design.



NEW VECTOR 22 CRB



PRODUCT HIGHLIGHTS:

- > 16" THREADED BARREL
- > LAST ROUND BOLT LOCK
- > ALUMINUM M-LOK HANDGUARD
- > AMBIDEXTROUS SAFETY
- > 6 POSITION M4 STOCK
- > 10RD MAGAZINE
- > LOW PROFILE FOLDING SIGHTS

COLOR OPTIONS:



Model	Caliber	Magazine Capacity	Frame Material	Barrel Length	Overall Length (Collapsed / Extended)	Height	Width	Weight (Unloaded)
Vector 22 CRB	.22LR	10 / 30	Advanced metal + polymer composite	16.0 in / 406.4 mm 1/2" x 28 Thread	34.5 in / 876.3 mm 37.7 in / 958.8 mm	6.8 in / 172.7 mm	2.6 in / 66.0 mm	7.4 lbs / 3.3kg

NEW VECTOR 22 SDP-SB



PRODUCT HIGHLIGHTS:

- > 6.5" THREADED BARREL
- > LAST ROUND BOLT LOCK
- > SB TACTICAL SBX-K ARM BRACE

COLOR OPTIONS:



Model	Caliber	Magazine Capacity	Frame Material	Barrel Length	Overall Length	Height	Width	Weight (Unloaded)
Vector 22 SDP-SB	.22LR	10 / 30	Advanced metal + polymer composite	6.5 in / 165.0 mm 1/2" x 28 Thread	24.3 in / 617.2 mm	6.8 in / 172.7 mm	2.6 in / 66.0 mm	5.6 lbs / 2.5 kg

DMK22 SERIES

The DMK22 is a dedicated .22LR semi-automatic rifle platform that is optimized for accuracy, realistic training, and offers limitless customization from front to back. Recognizing the need for low cost training and familiarization, KRISS USA Inc set out to design a rimfire rifle that replicates the form and function of centerfire AR15 rifles, while taking advantage of low cost .22 LR ammunition.

The patented barrel adapter allows DMK22 Series rifles to accept aftermarket 10/22 barrels to accommodate different performance needs. To accurately mimic AR15s, a functional, last round bolt catch is also included, which engages once ammunition in the DMK22 magazines has been expended. Popular .22 LR AR15 magazines may also be used, however the last round bolt catch only engages with KRISS DMK22 magazines.

PRODUCT HIGHLIGHTS

- A:** Ruger® 10/22 barrel compatibility*
- B:** Low profile folding sights
- C:** Free float handguard
- D:** Full length Picatinny top rail
- E:** Forged aluminum receivers
- F:** Last round bolt lock
- G:** Standard AR15 charging handle
- H:** M4 6 position stock
- I:** Standard AR15 safety selector

* KRISS USA recommends installation by a professional gunsmith.



Customize and add your favorite attachments by mounting keymod rail sections directly onto the DMK22 handguard.



Designed as the ultimate AR training platform the DMK22 features a true last round bolt lock function.

CUSTOMIZABILITY

The DMK22 is in a class of its own among .22LR firearms, thanks to its unparalleled construction and features. However, when customized with industry leading performance upgrades, the DMK22 is elevated to a whole new level.

1. The DMK22 is equipped with a mil-spec AR-15 buffer tube. The OEM stock on this model has been exchanged for one featuring a short picatinny rail section, designed for a monopod.



2. A variable zoom, first focal plane, scope has been added to the MIL-STD 1913 top receiver rail, allowing for competition grade accuracy.
3. The DMK22 is compatible with AR-15 triggers. Installed on this rifle is a flat bow, two stage, trigger with a 2.5lb press.
4. Additional AR-15 furniture add the finishing touches to this DMK22; such as the ergonomic pistol grip, extended charging handle, polished aluminum magazine release, and polished aluminum forward assist.
5. Ruger® 10/22, sporting chambered, barrels can be used in the DMK thanks to our patented barrel adaptor. This rifle has been fitted with a lightweight carbon fiber tension barrel to tighten its groupings to sub 1 MOA*.

DMK 22C



PRODUCT HIGHLIGHTS:

- > 16.5" THREADED BARREL
- > ALUMINUM FREE FLOAT HANDGUARD
- > PATENTED RUGER® 10/22 BARREL COMPATIBILITY

CERAKOTE® COLOR OPTIONS:

FLAT DARK EARTH

OLIVE DRAB

ALPINE

COMBAT GREY

Model	Caliber	Magazine Capacity	Frame Material	Barrel Length	Overall Length (Collapsed / Extended)	Height	Width	Weight (Unloaded)
DMK 22C	.22LR	10 / 15	Advanced metal + polymer composite	16.5 in / 419.1 mm 1/2" x 28 Thread	32.0 in / 812.8 mm 35.2 in / 895.4 mm	7.3 in / 184.4 mm	2.6 in / 66.0 mm	6.6 lbs / 2.9 kg

DMK 22P-SB



PRODUCT HIGHLIGHTS:

- > 8" THREADED BARREL
- > ALUMINUM FREE FLOAT HANDGUARD
- > SB TACTICAL SBX-K ARM BRACE

CERAKOTE® COLOR OPTIONS:

FLAT DARK EARTH

OLIVE DRAB

ALPINE

COMBAT GREY

Model	Caliber	Magazine Capacity	Frame Material	Barrel Length	Overall Length	Height	Width	Weight (Unloaded)
DMK 22P-SB	.22LR	10 / 15	Advanced metal + polymer composite	8 in / 203.2 mm 1/2" x 28 Thread	22.9 in / 581.6 mm	7.3 in / 184.4 mm	2.5 in / 65.5 mm	4.85 lbs / 2.2 kg

DMK 22C-LVOA



PRODUCT HIGHLIGHTS:

- > 16.5" THREADED BARREL
- > LICENSED WARSPORT® LVOA HANDGUARD
- > PATENTED RUGER® 10/22 BARREL COMPATIBILITY

CERAKOTE® COLOR OPTIONS:

FLAT DARK EARTH

OLIVE DRAB

ALPINE

COMBAT GREY

Model	Caliber	Magazine Capacity	Frame Material	Barrel Length	Overall Length (Collapsed / Extended)	Height	Width	Weight (Unloaded)
DMK 22C LVOA	.22LR	10 / 15	Advanced metal + polymer composite	16.5 in / 419.1 mm 1/2" x 28 Thread	32.0 in / 812.8 mm 35.2 in / 895.4 mm	7.3 in / 184.4 mm	2.6 in / 66.0 mm	7.1 lbs / 3.2 kg

DMK 22P



PRODUCT HIGHLIGHTS:

- > 8" THREADED BARREL
- > ALUMINUM FREE FLOAT M-LOK HANDGUARD
- > END CAP WITH QD SLING MOUNT

CERAKOTE® COLOR OPTIONS:

FLAT DARK EARTH

OLIVE DRAB

ALPINE

COMBAT GREY

Model	Caliber	Magazine Capacity	Frame Material	Barrel Length	Overall Length	Height	Width	Weight (Unloaded)
DMK 22P	.22LR	10 / 15	Advanced metal + polymer composite	8 in / 203.2 mm 1/2" x 28 Thread	16.6 in / 421.5 mm	7.3 in / 184.4 mm	2.5 in / 65.5 mm	4.25 lbs / 1.9 kg

HANDGUNS



SPHINX PISTOL **SERIES**



SPHINX pistols are precision built for the discerning shooter. Each part in a SPHINX pistol is machined from quality materials and fitted to ensure premium performance. Every pistol is packaged with grip inserts that accommodate various hand sizes. The grip inserts not only adjust the length of the grip but also the width of the palm swells.

Though there are many faster and more economical ways to produce a pistol, there is only one way to make a SPHINX and the tradition of excellence is the cornerstone of the SPHINX brand.

PRODUCT **HIGHLIGHTS**

- A:** Front slide serrations
- B:** PVD coated slide
- C:** Hard anodized aluminum upper and lower frame
- D:** Ambidextrous decocking lever
- E:** High cut bevertail
- F:** Interchangeable grip inserts
- G:** Beveled magazine well
- H:** Reversible magazine release
- I:** Enlarged trigger guard with undercut
- J:** Match grade trigger
- K:** Picatinny accessory rail



THREADED BARREL
Optional threaded barrel for the attachment of suppressors



CUSTOMIZABLE COMFORT
Three comfort grip inserts (S, M, L), allowing the shooter to adjust the width and depth of their pistol grip for the ideal fit.

SPHINX SIGNATURE DESIGN
Integrating the designs of the SPHINX tactical and competition lineage, the SPHINX SDP series is the complete package of the highest quality steel, aluminum, and advanced polymer composite construction.

A closer look at individual components will reveal the value of SPHINX, and why it is quickly becoming the top choice for shooters worldwide.

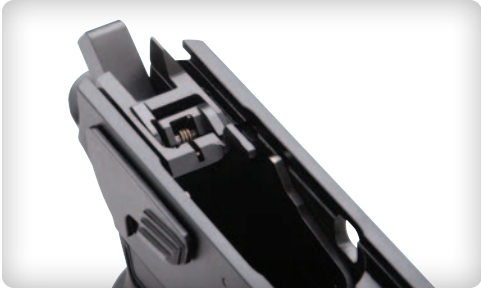


The slide of a SPHINX SDP is shallow in order to lower the bore axis, aiding the shooter with recoil management.

The frame of the SPHINX SDP is machined with full length guide rails designed to reduce axial slide movement and improve accuracy.



The lower frame of the SPHINX SDP is a standalone component that can be changed per the shooter's length and material preferences.



Every metal component on every SPHINX pistol is machined from a solid block of billet, then meticulously hand fitted. Custom quality craftsmanship in a production pistol.



The white dot front sight and black rear U-notch sight allow for immediate recognition when acquiring your sight picture for fast and accurate shooting.

SPHINX COMPACT DUTY



PRODUCT HIGHLIGHTS:

- EXTENDED FRAME FOR USE WITH 17 ROUND MAGAZINES

Model	Caliber	Magazine Capacity	Barrel Length	Twist Rate	Length	Height	Width	Weight (Unloaded)
Compact Duty	9x19	10 / 17	3.7 in / 93.9 mm	1:10" RH	7.4 in / 187.9 mm	5.7 in / 144.8 mm	1.4 in / 35.5 mm	29.7 oz / 841.9 g

FRAME MATERIAL & FINISH

	Black	Colors
Slide	PVD coated steel	Cerakote® steel
Upper Frame	Hard anodized aluminum	Cerakote® aluminum
Lower Frame	Hard anodized aluminum	Cerakote® aluminum

CERAKOTE® COLOR OPTIONS:

FLAT DARK EARTH

OLIVE DRAB

ALPINE

COMBAT GREY

SPHINX COMPACT



PRODUCT HIGHLIGHTS:

- COMPACT FRAME FOR USE WITH 15 ROUND MAGAZINES

Model	Caliber	Magazine Capacity	Barrel Length	Twist Rate	Length	Height	Width	Weight (Unloaded)
Compact	9x19	10 / 15	3.7 in / 93.9 mm	1:10" RH	7.4 in / 187.9 mm	5.4 in / 137.1 mm	1.4 in / 35.5 mm	29.1 oz / 824.9 g

FRAME MATERIAL & FINISH

	Black	Colors
Slide	PVD coated steel	Cerakote® steel
Upper Frame	Hard anodized aluminum	Cerakote® aluminum
Lower Frame	Hard anodized aluminum	Cerakote® aluminum

CERAKOTE® COLOR OPTIONS:

FLAT DARK EARTH

OLIVE DRAB

ALPINE

COMBAT GREY



SUPPRESSOR



4GSK

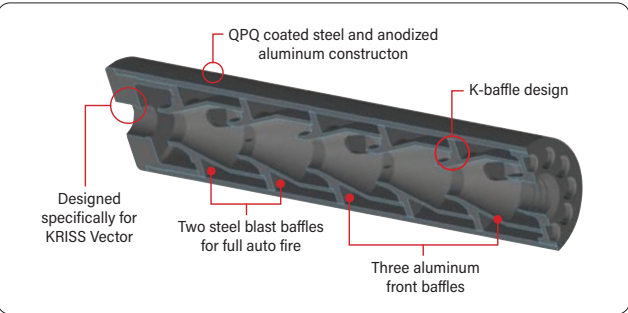
KRISS High Precision Suppressors are designed for various host firearms to deliver outstanding sound reduction and accuracy. The suppressors are full auto rated and minimize point of impact shift when in use. Attachment methods include: direct thread and 3 lug.

- PRODUCT HIGHLIGHT:
- > K-TYPE BAFFLE
 - > 5 BAFFLE COUNT

Model	Caliber	Length	Weight	Diameter	Material	Treatment	Barrel Threading
4GSK	.45ACP	197 mm	500 g	46 mm	T6 aluminum & steel alloys	Type III Mil-Spec black hard anodizing	16 x 1 mm LH Thread



CROSS SECTION:



4GC9 COMPACT

- PRODUCT HIGHLIGHT:
- > K-TYPE BAFFLE
 - > 4 BAFFLE COUNT

Model	Caliber	Length	Weight	Diameter	Material	Treatment	Barrel Threading
4GC5 COMPACT	9x19	153 mm	300 g	35.5 mm	T6 aluminum & steel alloys	Type III Mil-Spec black hard anodizing	M13.5 x 1 LH Thread



4GXT9 EXTENDED

- PRODUCT HIGHLIGHT:
- > K-TYPE BAFFLE
 - > 6 BAFFLE COUNT

Model	Caliber	Length	Weight	Diameter	Material	Treatment	Barrel Threading
4GXT9 EXTENDED	9x19	197 mm	420 g	35.5 mm	T6 aluminum & steel alloys	Type III Mil-Spec black hard anodizing	1/2" x 28 Thread



ACCESSORIES



MAGEX2 KIT

The KRISS MagEx2 Kit is the ultimate baseplate extension for your factory standard Glock® magazines. Available in 9x19, .45 ACP, and 10mm calibers.

COLOR OPTIONS:



FLAT DARK EARTH ALPINE

BLACK

9x19 [SKU: KVA-MX2K90BL00]
.45ACP [SKU: KVA-MX2K45BL00]
10mm [SKU: KVA-MX2K10BL00]

FLAT DARK EARTH

9x19 [SKU: KVA-MX2K90FD00]
.45ACP [SKU: KVA-MX2K45FD00]
10mm [SKU: KVA-MX2K10FD00]

ALPINE

9x19 [SKU: KVA-MX2K90AP00]
.45ACP [SKU: KVA-MX2K45AP00]
10mm [SKU: KVA-MX2K10AP00]



DMK22 10RDS & 15RDS MAGAZINE

The DMK22 magazines are designed to engage the last round bolt catch feature on DMK22 rifles and pistols when empty. Constructed of durable polymer, the magazines are user serviceable with minimal tools. Available in 10 and 15 round capacities

10RDS [SKU: DA-M10BL00]
15RDS [SKU: DA-M15BL00]



KRISS LOW PROFILE FLIP SIGHTS

These KRISS sights are designed to minimize bulk while folded. Point of impact adjustment can be made without tools, and the wide range of elevation adjustment is ideal for rifle and pistol caliber platforms.

STEEL FRONT [SKU: DA-FSBL00]
STEEL REAR [SKU: DA-RSBL00]
POLYMER FRONT [SKU: DA-PFSBL00]
PLYMER REAR [SKU: DA-PRSBL00]



COLOR OPTIONS:



FLAT DARK EARTH OLIVE DRAB ALPINE COMBAT GREY

DS150 STOCK

Made from advanced polymer composites, the DS150 is made to withstand the elements and provide stability with the use of a rifle. It also features two QD sling attachment points, rubber butt pad, and a specially designed adjustment lever that eases installation of the stock.

BLACK [SKU: DA-DS150BL00]
FLAT DARK EARTH [SKU: DA-DS150FD00]
OLIVE DRAB [SKU: DA-DS150GR00]
ALPINE [SKU: DA-DS150AP00]
COMBAT GREY [SKU: DA-DS150CG00]



VECTOR 22 10RDS MAGAZINE

The Vector 22 10 round magazine is a drop free, polymer magazine included with every Vector 22 model.

[SKU: DA-V22M10BL00]



VECTOR 22 30RDS MAGAZINE

The Vector 22 30 round magazine provides more ammunition capacity whether for training or competition. Fits all models of the Vector 22.

BLACK [SKU: DA-V22M30BL00]
FLAT DARK EARTH [SKU: DA-V22M30FD00]
ALPINE [SKU: DA-V22M30AP00]

COLOR OPTIONS:



FLAT DARK EARTH ALPINE



COLOR OPTIONS:



FLAT DARK EARTH OLIVE DRAB ALPINE COMBAT GREY

MK1 VECTOR MODULAR RAIL (VMR)

The MK1 Vector Modular Rail is a form fitting hand guard extension that accepts the addition of the side rail kits for the attachment of accessories. Mounts directly to the body of GEN 2 Vector Models.

BLACK [SKU: KVA-VMRBD01]
FLAT DARK EARTH [SKU: KVA-VMRFD01]
OLIVE DRAB [SKU: KVA-VMRGR01]
ALPINE [SKU: KVA-VMRAP01]
COMBAT GREY [SKU: KVA-VMRCG01]



VECTOR AMBIDEXTROUS FOLDING STOCK

The KRISS Vector Ambi Folding Stock is a drop in, replacement stock for the KRISS Vector Gen 2.1 platform. It features ambidextrous folding capability as well as 3 length of pull positions.

[SKU: KVA-FSBL30]



SPHINX MAGAZINES

SPHINX magazines are masterfully made in Italy from top quality steel and polymer. SPHINX magazines utilize high visibility, red followers and are available in 10, 15, and 17 round capacities.

10RDS [SKU: S4-PXXXX-X009]
15RDS [SKU: S4-PXXXX-X001]
17RDS [SKU: S4-PXXXX-X009]



ENHANCED SAFETY LEVER

The KRISS Vector enhanced safety levers are CNC machined, drop in upgrades for the KRISS Vector platform. The increased texturing and precision machining provides improved control, ensuring consistent and positive manipulation.

BLACK [SKU: KVA-SSBK00]
RED [SKU: KVA-SSRD00]



MK5 VECTOR MODULAR RAIL (VMR)

The KRISS VMR MK5 is a handguard designed specifically for Vectors with 6.5" length barrels or 5.5" length barrels with extended muzzle devices (such as suppressors and linear compensators). It allows users to attach a larger variety of accessories to the Vector.

[SKU: KVA-VMRBD07]



VECTOR HELMET STOCK

The KRISS Vector Helmet Stock is designed for users involved in high risk operations, where the use of a standard stock is impractical due to additional layers of protection.

The stock may be folded for compact storage and is adjustable for length of pull.
[SKU: KVA-FSBL32]



DMK22 AMBIDEXTROUS FOLDING STOCK ADAPTER

The DMK22 stock adapter is constructed of aluminum and steel and allows for the attachment of AR-15 type buffer or pistol tubes, and can be configured to fold to the left or right side with only a few tools, in a matter of moments.

[SKU: DA-FSABL00]



VECTOR AMBIDEXTROUS FOLDING STOCK ADAPTER

The KRISS Vector Folding Stock Adapter is a drop in accessory for those looking to attach their own stocks that utilize a standard MILSPEC buffer tube. Fits Vector Gen 2.1 models

[SKU: KVA-FSABL00]



PICATINNY HAND STOP

Serves as a point of reference to prevent the shooter's support hand from coming in contact with the barrel. Compatible with any MIL-STD 1913 Picatinny Rails.

[SKU: KVA-FGBL00]



SIDE RAIL KIT

7-slot Picatinny rail section that can be attached to the left or right side of the KRISS Vector lower receiver. The perfect solution for adding lights, lasers, and other shooting aids, to the Vector.

[SKU: KVA-SRKB00]



KRISS VERTICAL GRIP

The KRISS Vertical Grip is designed for short submachine gun platforms such as the KRISS Vector. The integrated hand stop helps to prevent end users from moving their fingers dangerously close to a weapon's muzzle. The grip features side panels which allow users to mount and route their light/laser tape switches to the vertical grip directly.

[SKU: KVA-VGBL00]



VECTOR ENHANCED SHROUD

Standard equipment on the KRISS Vector GEN 2, the Enhanced Shroud serves as an upgrade option for KRISS Vector GEN 1 owners seeking the modern look.

[SKU: KVA-CSSBL16]



ERGONOMIC PISTOL GRIP

This rugged pistol grip is comfortable and controllable with the grooved and channel cut front section for a secure grip.

BLACK [SKU: DA-PGBL00]
FLAT DARK EARTH [SKU: DA-PGFD00]
OLIVE DRAB [SKU: DA-PGGR00]
ALPINE [SKU: DA-PGAP00]
COMBAT GREY [SKU: DA-PGCG00]

COLOR OPTIONS:



FLAT DARK EARTH OLIVE DRAB ALPINE COMBAT GREY



All product specifications are subject to change without notice.

"Glock"™ is a registered trademark of Glock Health, Science and Research GmbH LLC Austria. Neither KRISS USA, Inc. nor this catalog are affiliated in any manner with, or otherwise endorsed by, Glock. The use of "Glock"™ in this catalog is merely to reference compatibility.

"Ruger"™ and "10/22"™ are registered trademarks of Sturm, Ruger & Co., Inc.. Neither KRISS USA, Inc. nor this catalog are affiliated in any manner with, or otherwise endorsed by, Sturm, Ruger & Co., Inc.. The use of "Ruger"™ and "10/22"™ in this catalog are merely to reference the compatibility of aftermarket components.

Headquarters
912 Corporate Lane
Chesapeake, VA 23320
U.S.A.

website: www.kriss-usa.com
toll free: +1 855 574-7787
fax: +1 714 276 2740
email: sales@kriss-usa.com



[Facebook.com/krissusainc](https://www.facebook.com/krissusainc)



[Twitter.com/krissusainc](https://twitter.com/krissusainc)



[Instagram@krissusainc](https://www.instagram.com/krissusainc)